



Little Thatch, 4 Oldways Road, Ravensden, Bedford MK44 2RD



Little Thatch
4 Oldways Road
Ravensden
Bedford MK44 2RD

Price £475,000

Part thatch and tiled cottage...

- Entrance hall
- Living room
- Family room
- Dining room
- Kitchen
- Bathroom
- Three double bedrooms
- En suite to master bedroom
- Off road parking
- South-west facing rear garden
- Views over open countryside

- Council Tax Band D
- Energy Efficiency Rating E



With views over open countryside...



A superb opportunity to acquire this detached part thatched and part tiled three double bedroom cottage thought to date back to the early eighteenth century and being Listed Grade Two as being of special archaeological interest.

The property is entered from the side in to an entrance hall that provides access to the good size living room that has a feature brick fireplace with an inset wood burning stove. The family room is reached from the living room and a side hall divides the family room from the dining room with its original range and adjoining kitchen that is fitted in a range of modern units. A family bathroom completes the ground floor accommodation.

The first floor comprises three double bedrooms with the master have an en suite shower room.

Additional benefits include oil fired central heating.

Externally there is parking for up to three vehicles at the front and a side path leads to the enclosed, established, south-west facing rear garden that has much character including a raised decked area, a patio and a pond.

Oldways Road lies off the B660, which allows for quick and easy access to Bedford's town centre facilities and the mainline railway station which are around four miles away, with Kimbolton being around ten miles. Ravensden has a Primary School, a shop and a Public House/restaurant. Bedford's facilities are numerous with a choice of schools, shops, cafes, restaurants and recreational facilities including the Mowsbury Golf & Squash Centre that is just two miles away.

Bedford Railway Station • 3 miles

Milton Keynes • 25 miles

A1 Black Cat Roundabout • 8 miles

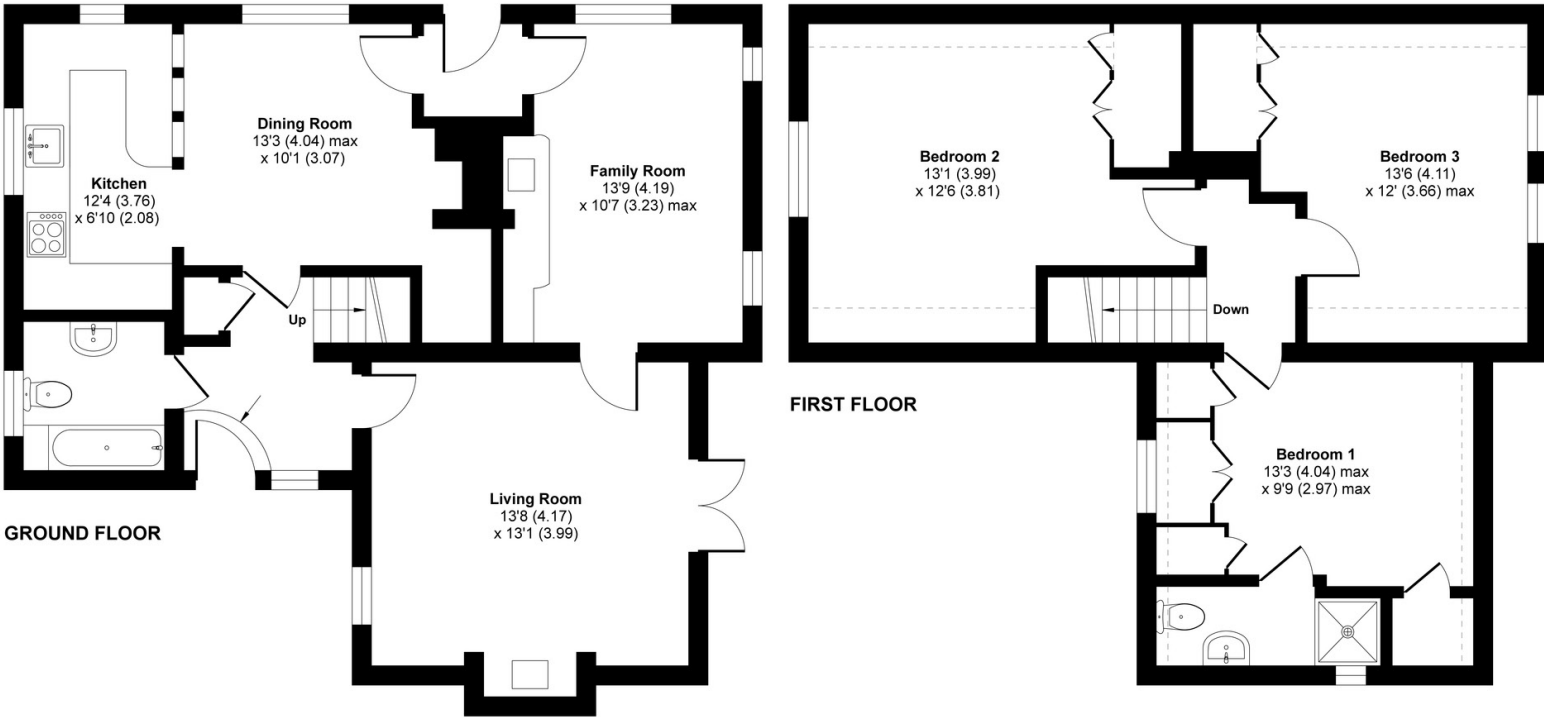


Oldways Road, Ravensden, Bedford, MK44

Approximate Area = 1247 sq ft / 116 sq m
 Limited Use Area(s) = 73 sq ft / 7 sq m
 Total = 1320 sq ft / 123 sq m
 For identification only - Not to scale



Denotes restricted head height



Floor plan produced in accordance with RICS Property Measurement Standards incorporating International Property Measurement Standards (IPMS2 Residential). © nichecom 2021. Produced for Lane & Holmes. REF: 788357



01234 327744 | sales@laneandholmes.co.uk | www.laneandholmes.co.uk | 66-68 St. Loyaes Street, Bedford, Bedfordshire MK40 1EZ

Agents Notes: The agent has not tested any apparatus, equipment, fixtures & fittings or services and so cannot verify that they are in working order or fit for the purpose. A buyer is advised to obtain verification from their solicitor or surveyor. All photographs shown are for illustration only and may depict items that are not for sale or included in the sale of the property. Please note that we have not checked the situation with regards to planning consents, building regulation consents and any other relevant consent relating to this property and therefore, any interested applicant should carry out their own enquiries with the appropriate authorities. All measurements are approximate and for guidance only. The particulars do not form part of any contract and all properties are offered subject to contract.

